



Request for Quotes (RFQ) Schoolhouse Park Hardscape Improvements

PROJECT DESCRIPTION:

The Centerville-Washington Park District (CWPD) is accepting quotes for hardscape improvements at Schoolhouse Park [Schoolhouse - Centerville-Washington Park District](#). Interested parties are asked to email quotes to Ken Carter at kcarter@cwpd.org by Monday, July 21, 2025.

*This project is Non-Prevailing Wage

SCOPE OF SERVICES:

Scope of Services:

Project Overview: Bidders are invited to submit a quote for the excavation and removal of existing asphalt and concrete, and the installation of new pavement, as shown in **Exhibit A**.

1. Pre-Construction Activities:

- **Site Assessment & Survey:** Conduct a site visit to assess the condition of the existing asphalt and concrete surfaces. Identify areas that require special attention and ensure proper alignment to meet existing grade standards.
- **Traffic Control Plan:** Develop a traffic control plan to manage pedestrian and vehicle traffic during construction, ensuring public safety and minimal disruption to park users.
- **Permits and Approvals:** Obtain all necessary permits and approvals from relevant authorities, including local and state permits, environmental clearances, and utility locates, before commencing work.
- **Certificate of Liability Insurance:** A Certificate of Liability Insurance must be provided before commencing work.

2. Excavation and Removal of Existing Asphalt and Concrete:

- **Excavation of Existing Asphalt:** Excavate and remove the existing asphalt and concrete, including the hauling away of all debris and its disposal in accordance with environmental guidelines.
- **Subgrade Preparation:** Excavate to the necessary depth for a new surface, ensuring proper grading to meet the design specifications.

3. Installation of Concrete:

937.433.5155 
www.cwpd.org 
mail@cwpd.org 
221 N. Main Street
Centerville, Ohio 45459 

- **Formwork and Grading:** Set forms to create the proper alignment and grade with a minimum depth of 4 inches. Ensure a consistent slope for drainage away from courts and fields to prevent water accumulation.
- **Compaction of Base Material:** Verify the gravel base layer beneath the concrete walkway to ensure it is level and stable. Adjust by adding or removing gravel as needed.
- **Reinforcement:** Install necessary reinforcement, such as rebar or wire mesh, to provide strength and prevent cracking.
- **Concrete Pouring and Finishing:** Concrete must be transported and placed without damaging or harming existing surfaces. Pour the concrete, ensuring a smooth, level surface and the proper placement of expansion joints.
- **Surface Finishing:** Finish the concrete surface to achieve a non-slip, pedestrian-friendly texture.
- **Curing:** Ensure the concrete cures properly for optimal strength and durability.

3.1 Specification for Saw Cutting Control Joints

3.2 Joint Spacing:

- **Transverse Control Joints:**
Cut control joints at intervals, matching existing widths (a square layout is ideal: spacing = panel width).

3.3 Saw Cut Depth:

- Control joints should be **at least 1/4 the depth of the slab**.
 - For a 4-inch-thick slab, the saw cut should be **at least 1 inch deep**.

3.4 Timing of Saw Cutting:

- Begin saw cutting **as soon as the concrete has hardened enough** to prevent raveling, but **before random cracking occurs**.
 - This is usually within **4 to 12 hours** after finishing, depending on weather and concrete mix.
 - **Early-entry saws** can be used as early as **1 to 4 hours** after finishing.

3.5 Saw Blade Type:

- Use a saw blade compatible with the concrete mix and curing stage:
 - **Wet saws** for standard cutting.
 - **Early-entry dry-cut saws** for green concrete.

3.6 Layout:

- Joints should be **straight, perpendicular to the sidewalk edges**, and aligned with any adjacent pavement joints where applicable.
- Mark layout lines before cutting if precision is needed.

4. Curing Consideration:

- Saw cutting should **not interfere with curing**. Minimize water use during cutting to avoid affecting surface curing if wet saws are used.

Site Restoration and Final Touches:

- **Restoration of Surrounding Areas:** Restore any disturbed landscaping or features surrounding the walkway, including sod replacement or replanting.
 - **Safety Features Installation:** Install any required pedestrian safety features, such as reflective striping, signage, or any other relevant park amenities.
-

6. Final Completion:

- **Inspection and Approval:** Conduct a final inspection with the project manager or designated representative to ensure the completed work meets specifications and is safe for public use.
 - **Warranty Period:** Offer a 1-year warranty for both asphalt and concrete surfaces, covering any defects in materials or workmanship.
-

7. Completion Timeline: The proposed timeline should be clearly stated, including the expected duration for excavation and concrete curing.

8. Quality and Material Specifications: Proposals must include the specific material specifications, including the type of asphalt or concrete to be used, reinforcement methods, and any treatment or finishing required for the surfaces.

9. Safety

- **Personal Protective Equipment:** Ensure all workers wear appropriate personal protective equipment, including gloves, safety glasses, and respiratory protection.
- **Traffic Control:** Implement traffic control measures to protect workers and motorists during the sealing operation.

937.433.5155



www.cwpd.org



mail@cwpd.org



221 N. Main Street
Centerville, Ohio 45459





9. SELECTION PROCESS: Proposals will be evaluated using the following criteria:

- Experience with projects of similar scope and size
- Unit and total cost. Depending on the total cost and available budget, the park district has the right to award a contract for all, part, or none of the projects listed in **Exhibit A**.
- Project timeline. Please provide an estimated timeline for the project's start and completion dates.

CWPD reserves the right to reject any and all proposals, cancel this solicitation, and to waive any informalities or irregularities in procedure. CWPD accepts no responsibility for any expense incurred by the submitting entity when preparing a proposal.

End of section

937.433.5155



www.cwpd.org



mail@cwpd.org



221 N. Main Street
Centerville, Ohio 45459



Exhibit A: Schoolhouse Park- 2025 Hardscape Improvements:

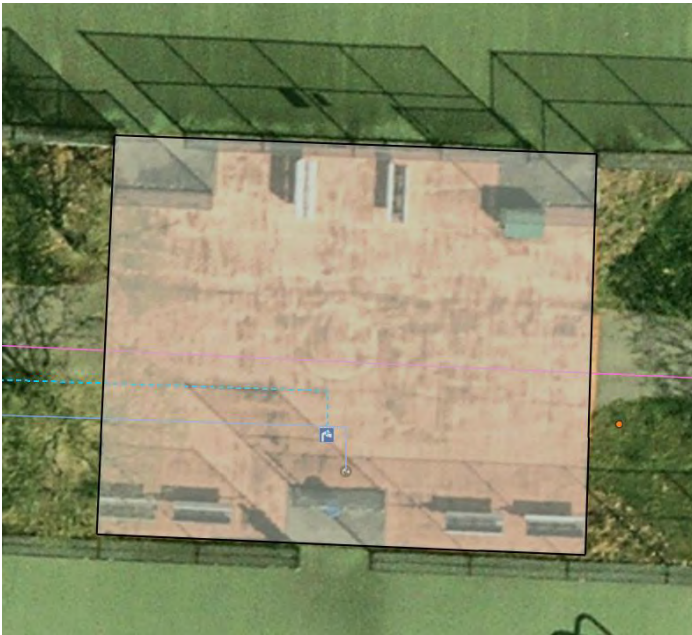


Image #1: (Demo asphalt as noted by shaded area above)



Image #2: (Install new concrete in the shaded area

Scope:

- Remove the existing painted/stamped asphalt
- Remove fencing at the entrance of the Basketball Courts
- Install new concrete as shown in image #2 (Approx. 1200sq.ft. (Bidder to field verify)
- The six existing park benches are to be removed and left on site for the owner
- Restore (topsoil, seed, and straw) disturbed areas.

937.433.5155

www.cwpd.org

mail@cwpd.org

221 N. Main Street
Centerville, Ohio 45459



Exiting Conditions:

Tennis/ Basketball courts:



Subtotal Cost Tennis/Basketball: \$ _____

937.433.5155



www.cwpd.org



mail@cwpd.org



221 N. Main Street
Centerville, Ohio 45459



Baseball Field Dugout Improvements



Baseball Fields:

Scope:

- Remove existing concrete in the dugouts as highlighted above
- Trees will be removed and stumps ground below the surface by the owner. Contractor responsible for grubbing all remaining stumps and roots before installing new concrete.
- Install new concrete (approximately 1,500 sq. ft.)
- All fencing and benches to remain
- Restore (topsoil, seed, and straw) disturbed areas.

937.433.5155



www.cwpd.org



mail@cwpd.org



221 N. Main Street
Centerville, Ohio 45459



Existing Conditions: Baseball Field #1



First Base Dugout- Saw cut existing concrete, grub out remaining stump and roots, install new concrete



Third Base Dugout- Saw cut existing concrete and install new concrete to eliminate the dirt-filled area where a tree was removed.

Subtotal Cost Field #1: \$ _____

937.433.5155



www.cwpd.org



mail@cwpd.org



221 N. Main Street
Centerville, Ohio 45459



Existing conditions- Baseball Field #2:



Third Base Dugout: Saw cut existing concrete, Grub out remaining stump and roots, install new concrete



First Base Dugout: Saw cut existing concrete, Grub out remaining stump and roots, install new concrete.

Subtotal Cost Field #2: \$ _____

937.433.5155



www.cwpd.org



mail@cwpd.org



221 N. Main Street
Centerville, Ohio 45459





SUMMARY OF COST:

Company Name: _____

Primary Contact: _____

Email: _____

Phone: _____

Project Area	Lump sum cost
Tennis and Basketball	\$
Baseball Field #1	\$
Baseball Field #2	\$
Total	\$
Unit cost for additional concrete (Square Yards)	\$

Project Schedule:

Anticipated start date: _____

Number of days to complete: _____

937.433.5155



www.cwpd.org



mail@cwpd.org



221 N. Main Street
Centerville, Ohio 45459

