



February 13, 2026

## Request For Proposals (RFP)

**DATE POSTED:** February 13, 2026

**DATE DUE:** March 13, 2026, by 5:00pm

### Summary and Project Description:

The Centerville-Washington Park District (CWPD) is issuing a Request for Proposals for asphalt repair and replacement projects. This project will cover varying scopes of work within Oak Grove Park. Please review the projects below and provide a quote for the items listed at each project location. There will be line items for asphalt crack filling, seal coating, crack repair, pavement marking and asphalt removal and replacement.

### Background and Need

The Centerville-Washington Park District (CWPD) strives to maintain and repair asphalt surfaces in the best way possible. The 2026 project list focuses on addressing both repair and replacement items, as well as preventive maintenance items, across multiple locations throughout Oak Grove Park.

### Location and Project Details

Project location is Oak Grove Park, 1790 E Social Row Rd. Centerville, Ohio 45459. Project details for each location within the park are listed in the attached Appendix A. Area sizes are provided as a guide and are thought to be accurate; the contractor is to verify quantities. Contractors may recommend alternate products or processes. The contractor will need to provide additional information on a recommended alternate process and/or manufacturer specifications with their proposal for any alternate products.

### Scope of Services:

The scope of services includes crack sealing in asphalt pavement surfaces using a hot-applied asphalt crack sealant, Seal coating of asphalt surfaces using Neyra AE Sealcoat, Removal and replacement of asphalt in areas that have failed, 2" Asphalt mill and overlay in areas that have settled and are causing a trip hazard, Pavement markings, and Reclamite asphalt rejuvenator application.

937.433.5155



[www.cwpd.org](http://www.cwpd.org)



[mail@cwpd.org](mailto:mail@cwpd.org)



221 N. Main Street  
Centerville, Ohio 45459





### **Prevailing Wage**

The anticipated cost of this project will exceed the threshold for Public Projects that trigger prevailing wage requirements. The Bidder to whom the Contract is awarded will be required to pay, at a minimum, the prevailing wage rate promulgated by the State. It is the Bidder's responsibility to ensure utilization of the most current prevailing wage rates. A schedule of the prevailing wage rates may be accessed by registering with the Ohio Department of Commerce, Labor and Worker Safety Division, Wage and Hour Bureau at the following web address: [View Prevailing Wage Rates | Ohio Department of Commerce](#).

### **Proposal Submittal**

Proposals should include the following:

- Project estimate with a line-item cost breakdown
- Timeline for completion
- Warranty information
- Reference section
  - Description of previous experience with comparable projects
  - Project manager who would be directly involved with this project. Provide information about any sub-contractors that may be utilized for this project.

### **Evaluation**

The following criteria will be used to evaluate proposals:

- a. Experience and knowledge of product and scope
- b. Ability to meet the established timeline and schedule
- c. Cost estimate based on the details and scope found above
- d. History of performance with CWPD on similar projects

### **Centerville-Washington Park District Obligations and Rights:**

Response to the RFP is entirely voluntary. This RFP does not and shall not commit the Centerville-Washington Park District or any of its agents to enter into any agreement, to pay any costs incurred in the preparation of any response to this RFP, or to procure or contract for any services or supplies.

937.433.5155



[www.cwpd.org](http://www.cwpd.org)



[mail@cwpd.org](mailto:mail@cwpd.org)



221 N. Main Street  
Centerville, Ohio 45459





The Centerville-Washington Park District reserves the right to accept or reject any or all responses to this RFP, to enter into contractual agreement with any individual or company submitting a response to the RFP, or to delay and/or cancel in part or in its entirety this RFP if it is in the best interest of the Centerville-Washington Park District, in its sole opinion, to do so.

#### **Additional Information**

Additional information about the Centerville-Washington Park District can be found on our website, [www.cwpd.org](http://www.cwpd.org). If you have any questions regarding this proposal, please contact Tony Carpenter at [tcarpenter@cwpd.org](mailto:tcarpenter@cwpd.org).

Proposals will be accepted by email no later than 5:00pm on March 13, 2026 to [tcarpenter@cwpd.org](mailto:tcarpenter@cwpd.org)

Sincerely,  
Tony Carpenter  
Project & Planning Manager  
221 N. Main St  
Centerville, OH 45459

937.433.5155



[www.cwpd.org](http://www.cwpd.org)



[mail@cwpd.org](mailto:mail@cwpd.org)



221 N. Main Street  
Centerville, Ohio 45459



# Centerville-Washington PARK DISTRICT

## Appendix A



## Oak Grove Park

1790 E. Social Row Road



2.22.13

937.433.5155

www.cwpd.org

mail@cwpd.org

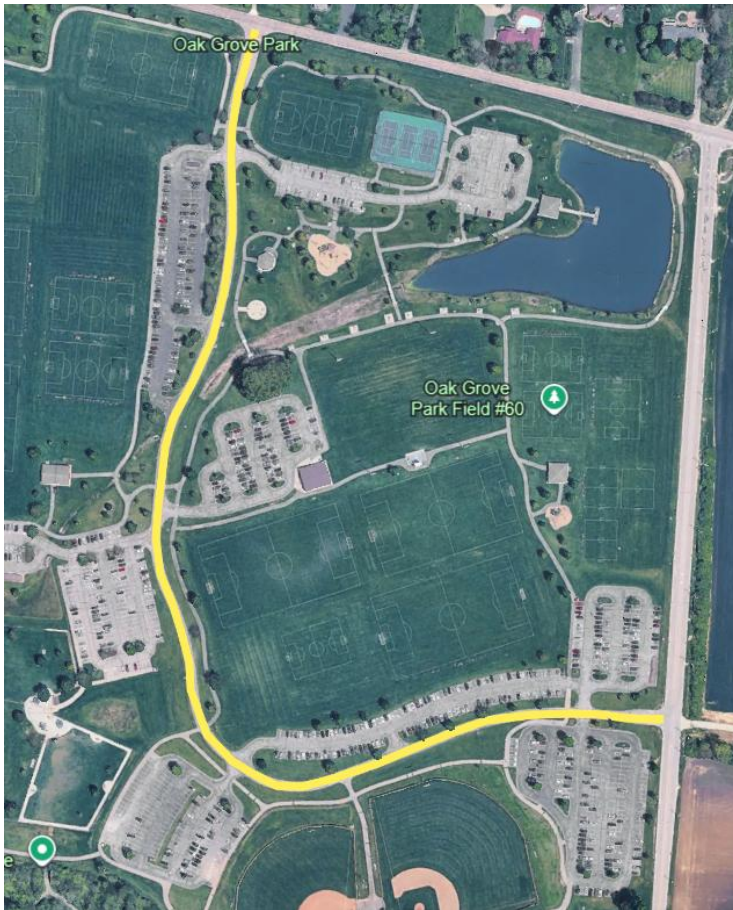
221 N. Main Street  
Centerville, Ohio 45459





**Oak Grove Park – 1790 East Social Row Rd**

**Entry Drive from Social Row to Gebhart**



Area	Map Color	Notes	Sq. Yards	Treatment Type
Entrance Drive	Yellow	Social Row to Gebhart Rd	5,789	ODOT #423 Type 1 Crack Seal
Entrance Drive	Yellow	Social Row to Gebhart Rd	5,789	Neyra AE Sealcoat
Striping - dash centerline, stop bars, arrows	Yellow			White lines

937.433.5155

www.cwpd.org

mail@cwpd.org

221 N. Main Street  
Centerville, Ohio 45459



## Parking Lot A



Area	Map Color	Notes	Sq. Yards	Treatment Type
Parking Lot - A 127 Spaces	Yellow		5,910	ODOT #423 Type 1 Crack Seal
Parking Lot - A 127 Spaces	Yellow		5,910	Neyra AE Sealcoat
Striping - 122 regular, 5 handicap; in/out arrows	Yellow			White spaces, Blue handicap
Curb/walkway connection	Orange	520'X9'	520	2" Asphalt mill & overlay
Parking lot patch	Red	Transverse cracks (5 total) 110'X2'	125	Cut out and replace
Parking lot patch	Blue	20X20	45	Cut out and replace

937.433.5155

[www.cwpd.org](http://www.cwpd.org)

[mail@cwpd.org](mailto:mail@cwpd.org)

221 N. Main Street  
Centerville, Ohio 45459



## Parking Lot B



Area	Map Color	Notes	Sq. Yards	Treatment Type
Parking Lot - B 38 spaces	Yellow		1,445	ODOT #423 Type 1 Crack Seal
Parking Lot - B 38 spaces	Yellow		1,445	Neyra AE Sealcoat
Striping - 34 regular, 4 handicap; in/out arrows	Yellow			White spaces, Blue handicap
Parking lot patch	Blue	20X25	45	Cut out and replace
Curb/Walkway Connection	Orange	200'X9' Playground side	200	2" Asphalt mill & overlay
Curb/Walkway Connection	Orange	185'X9'	185	2" Asphalt mill & overlay

937.433.5155



[www.cwpd.org](http://www.cwpd.org)



[mail@cwpd.org](mailto:mail@cwpd.org)

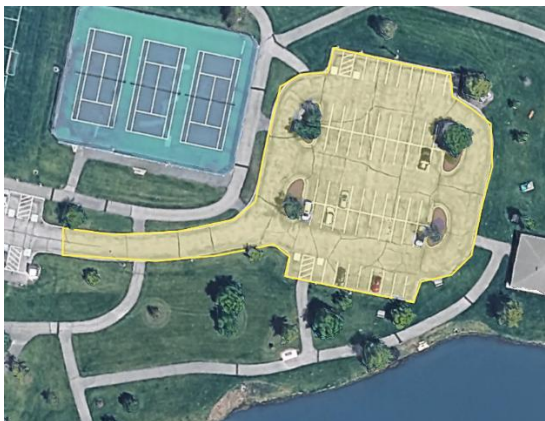


221 N. Main Street  
Centerville, Ohio 45459





## Parking Lot C



Area	Map Color	Notes	Sq. Yards	Treatment Type
Parking Lot - C 64 Spaces	Yellow		3,480	ODOT #423 Type 1 Crack Seal
Parking Lot - C 64 Spaces	Yellow		3,480	Neyra AE Sealcoat
Striping - 60 regular, 4 handicap	Yellow			White spaces, Blue handicap

## Parking Lot D



Area	Map Color	Notes	Sq. Yards	Treatment Type
Parking Lot - D 86 Spaces	Yellow		5,430	ODOT #423 Type 1 Crack Seal
Parking Lot - D 86 Spaces	Yellow		5,430	Neyra AE Sealcoat
Striping - 80 regular, 6 handicap; in/out arrows	Yellow			White spaces, Blue handicap

937.433.5155

[www.cwpd.org](http://www.cwpd.org)

[mail@cwpd.org](mailto:mail@cwpd.org)

221 N. Main Street  
Centerville, Ohio 45459





## Parking Lot E



Area	Map Color	Notes	Sq. Yards	Treatment Type
Parking Lot - E 59 Spaces	Yellow		2,855	ODOT #423 Type 1 Crack Seal
Parking Lot - E 59 Spaces	Yellow		2,855	Neyra AE Sealcoat
Curb/Walkway Connection	Orange	150'X9'	150	2" Asphalt mill & overlay
Striping - 57 regular, 2 handicap	Yellow			White spaces, Blue handicap

937.433.5155



[www.cwpd.org](http://www.cwpd.org)



[mail@cwpd.org](mailto:mail@cwpd.org)



221 N. Main Street  
Centerville, Ohio 45459



## Parking Lot F



Area	Map Color	Notes	Sq. Yards	Treatment Type
Parking Lot - F 148 spaces	Yellow		5,780	ODOT #423 Type 1 Crack Seal
Parking Lot - F 148 spaces	Yellow		5,780	Neyra AE Sealcoat
Striping - 141 regular, 5 handicap, 2 EV; In/Out arrows	Yellow			White spaces, Blue handicap
Entry patch	Blue	30'X50' at entry to lots E & F	170	Cut out and replace
Curb/Walkway Connection	Orange	110'X9'	110	2" Asphalt mill & overlay
Curb/Walkway Connection	Orange	230'X9' Dog park side	230	2" Asphalt mill & overlay

937.433.5155

[www.cwpd.org](http://www.cwpd.org)

[mail@cwpd.org](mailto:mail@cwpd.org)

221 N. Main Street  
Centerville, Ohio 45459



## Parking Lot G



Area	Map Color	Notes	Sq. Yards	Treatment Type
<b>Parking Lot - G 153 Spaces</b>	Yellow		6,420	ODOT #423 Type 1 Crack Seal
<b>Parking Lot - G 153 Spaces</b>	Yellow			Neyra AE Sealcoat
<b>Striping - 148 regular, 5 handicap; in/out arrows</b>	Yellow			White spaces, Blue handicap
<b>Parking Lot patch</b>	Yellow	Multiple Repair Areas - Total (66 sy)	66	Cut out and replace

937.433.5155



[www.cwpd.org](http://www.cwpd.org)



[mail@cwpd.org](mailto:mail@cwpd.org)



221 N. Main Street  
Centerville, Ohio 45459





**Parking Lot H**



Area	Map Color	Notes	Sq. Yards	Treatment Type
Parking Lot - H 131 Spaces	Yellow		4,533	ODOT #423 Type 1 Crack Seal
Parking Lot - H 131 Spaces	Yellow		4,533	Neyra AE Sealcoat
Striping - 131 regular, in/out arrows	Yellow			White spaces



## Parking Lot I



Area	Map Color	Notes	Sq. Yards	Treatment Type
Parking Lot - I 190 Spaces	Yellow		9,833	ODOT #423 Type 1 Crack Seal
Parking Lot - I 190 Spaces	Yellow		9,833	Neyra AE Sealcoat
Striping - 183regular, 7 handicap; in/out arrows	Yellow			White spaces, Blue handicap

937.433.5155

[www.cwpd.org](http://www.cwpd.org)

[mail@cwpd.org](mailto:mail@cwpd.org)

221 N. Main Street  
Centerville, Ohio 45459



## Parking Lot J



Area	Map Color	Notes	Sq. Yards	Treatment Type
Parking Lot - J 94 Spaces	Yellow		4,855	ODOT #423 Type 1 Crack Seal
Parking Lot - J 94 Spaces	Yellow		4,855	Neyra AE Sealcoat
Striping - 88regular, 6 handicap; in/out arrows	Yellow			White spaces, Blue handicap

937.433.5155

[www.cwpd.org](http://www.cwpd.org)

[mail@cwpd.org](mailto:mail@cwpd.org)

221 N. Main Street  
Centerville, Ohio 45459



## Baseball Complex



Area	Map Color	Notes	Sq. Yards	Treatment Type
Pavement Around Baseball Complex	Yellow		4,810	ODOT #423 Type 1 Crack Seal
Pavement Around Baseball Complex	Yellow		4,810	Neyra AE Sealcoat
Pavement Around Baseball Complex	Yellow	500' X 2' random cracks throughout the complex	125	Cut Out - Asphalt Repair (Wide Cracks)

937.433.5155

[www.cwpd.org](http://www.cwpd.org)

[mail@cwpd.org](mailto:mail@cwpd.org)

221 N. Main Street  
Centerville, Ohio 45459





Archery Range



Area	Map Color	Notes	Sq. Yards	Treatment Type
Archery Range	Orange		1,485	Reclamite Asphalt Rejuvenator



## Proposal Sheet

Qty.	Unit	Treatment Type	Unit Cost	Total Cost
		ODOT #423 Type 1 Crack Seal		
		Neyra AE Sealcoat		
		Striping - Pavement marking		
		Cut out and replace		
		Cut Out - Asphalt Repair (Wide Cracks)		
		Reclamite Asphalt Rejuvenator		
		2" Asphalt Mill & Overlay		
			<b>TOTAL PROJECT COST</b>	

937.433.5155



www.cwpd.org



mail@cwpd.org



221 N. Main Street  
Centerville, Ohio 45459

